

<b>Title</b>	United Way of King County
<b>Staff Lead</b>	Michael P. Meotti
<b>Position</b>	Executive Director
<b>Email</b>	<a href="mailto:michaelm@wsac.wa.gov">michaelm@wsac.wa.gov</a>
<b>Phone</b>	360.753.7800
<b>Synopsis</b>	Representatives from the United Way of King County will share information on current United Way programs and initiatives that support increased educational attainment.
<b>Guiding Questions</b>	How do the United Way of King County's regional efforts contribute to the state's educational attainment goals?
<b>Possible Council Action</b>	<input checked="" type="checkbox"/> Information/Discussion <input type="checkbox"/> Approve/Adopt <input type="checkbox"/> Other
<b>Documents and Attachments</b>	<input type="checkbox"/> Brief/Report <input type="checkbox"/> PowerPoint <input checked="" type="checkbox"/> Third-party materials <input type="checkbox"/> Other

# LIVE UNITED



United Way of King County

#UWKC

Together, we're building a  
community where **people have  
homes, students graduate and  
families are financially stable.**

LIVE UNITED



United Way of King County

Together, we're building  
a community where  
people have homes,  
students graduate  
and **families are  
financially stable.**

# 50,000

people rise out of  
poverty



# Poverty and Food Insecurity Data

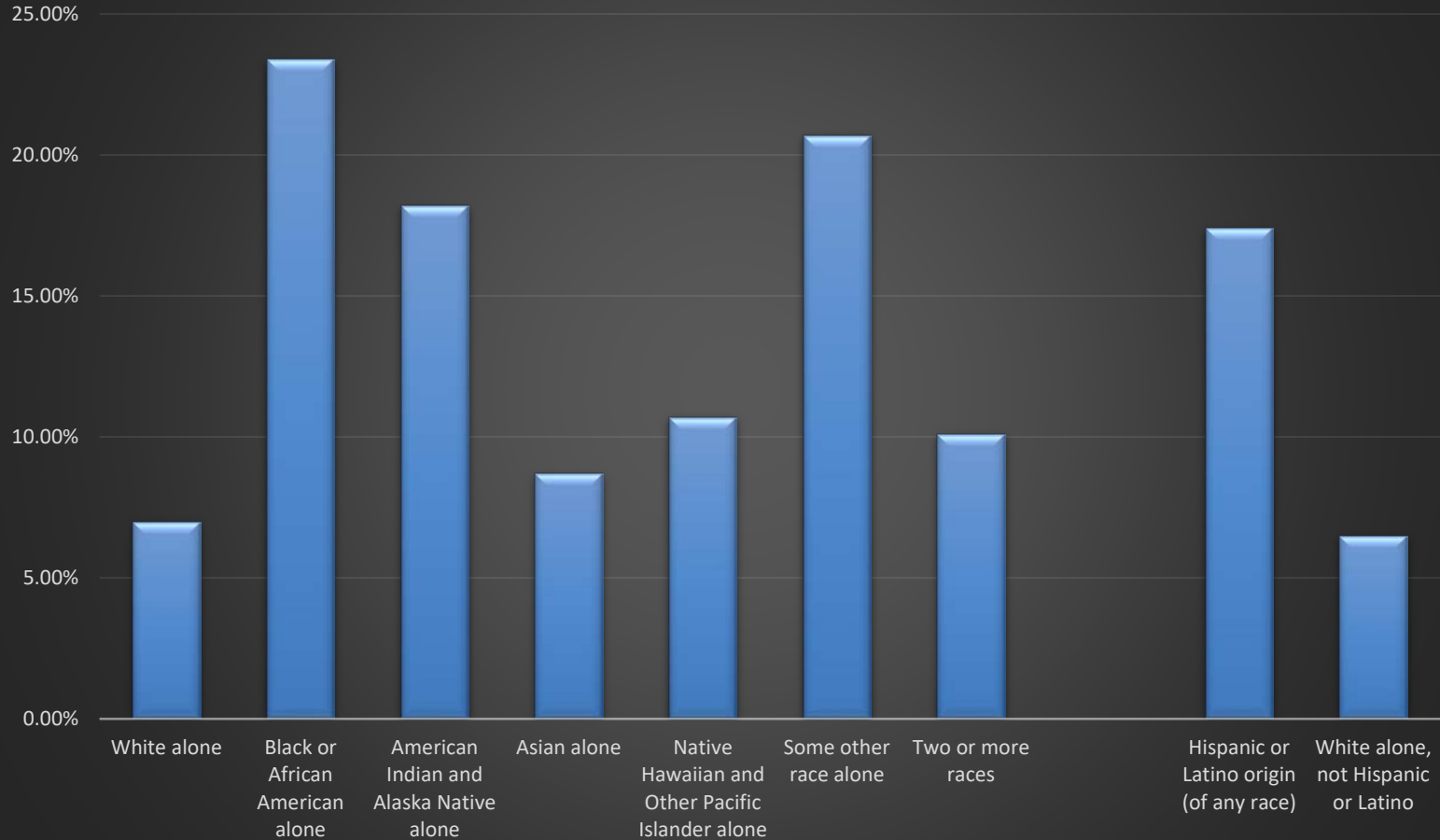
- Nationally 12.3 percent of people live below the poverty level.
- 9.3% of King County families live below the poverty level – earning less than \$24,858 for a family of four.
- King County median household income rose from \$75,416 in 2013 to \$89,675 in 2017
- People of color are disproportionately impacted by poverty in King County – more than 18.2 % American Indians and Alaska Natives, 23.4% of Black people, and more than 17.4% of Hispanic people live below the poverty line.

LIVE UNITED

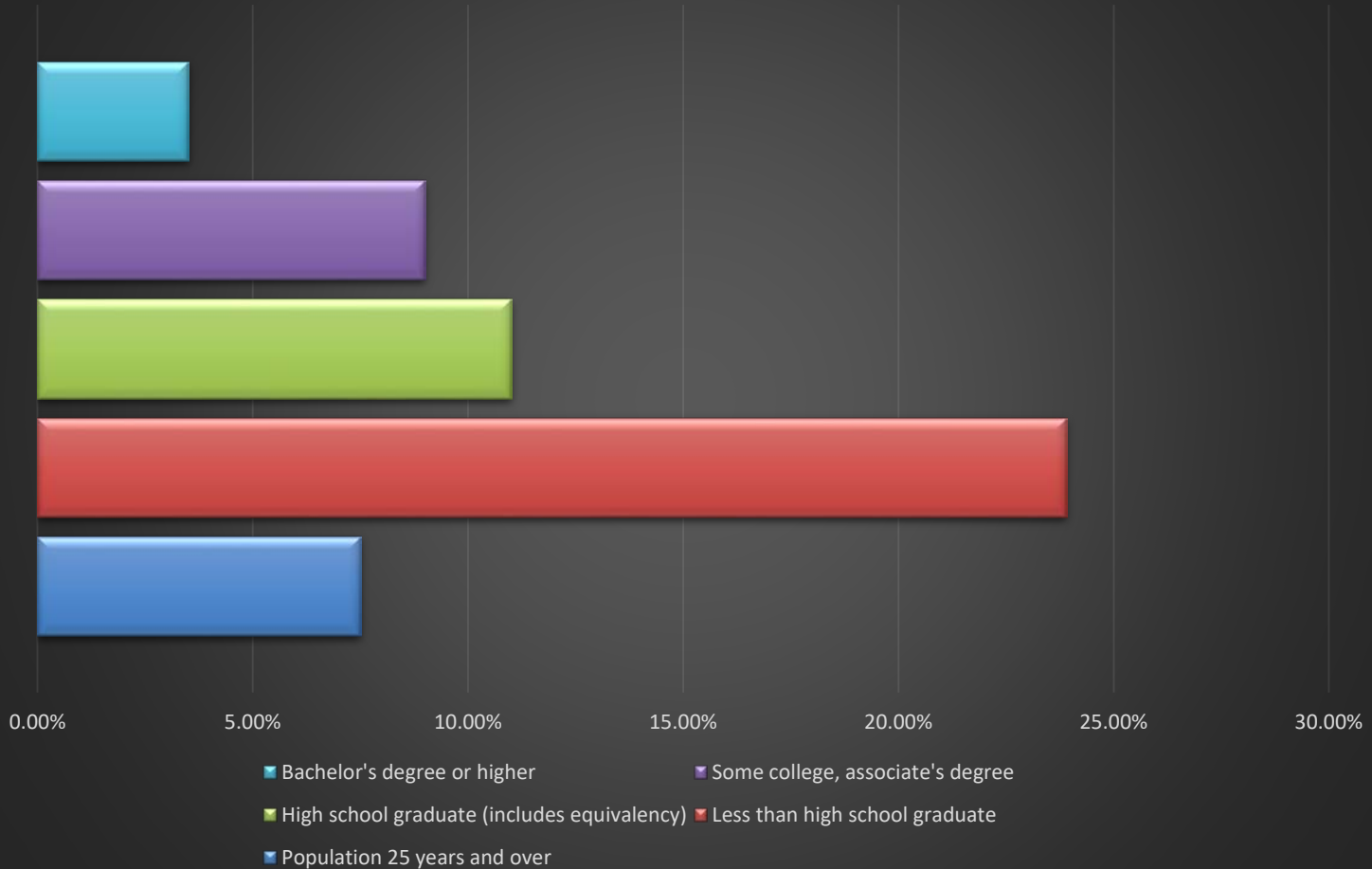


United Way of King County

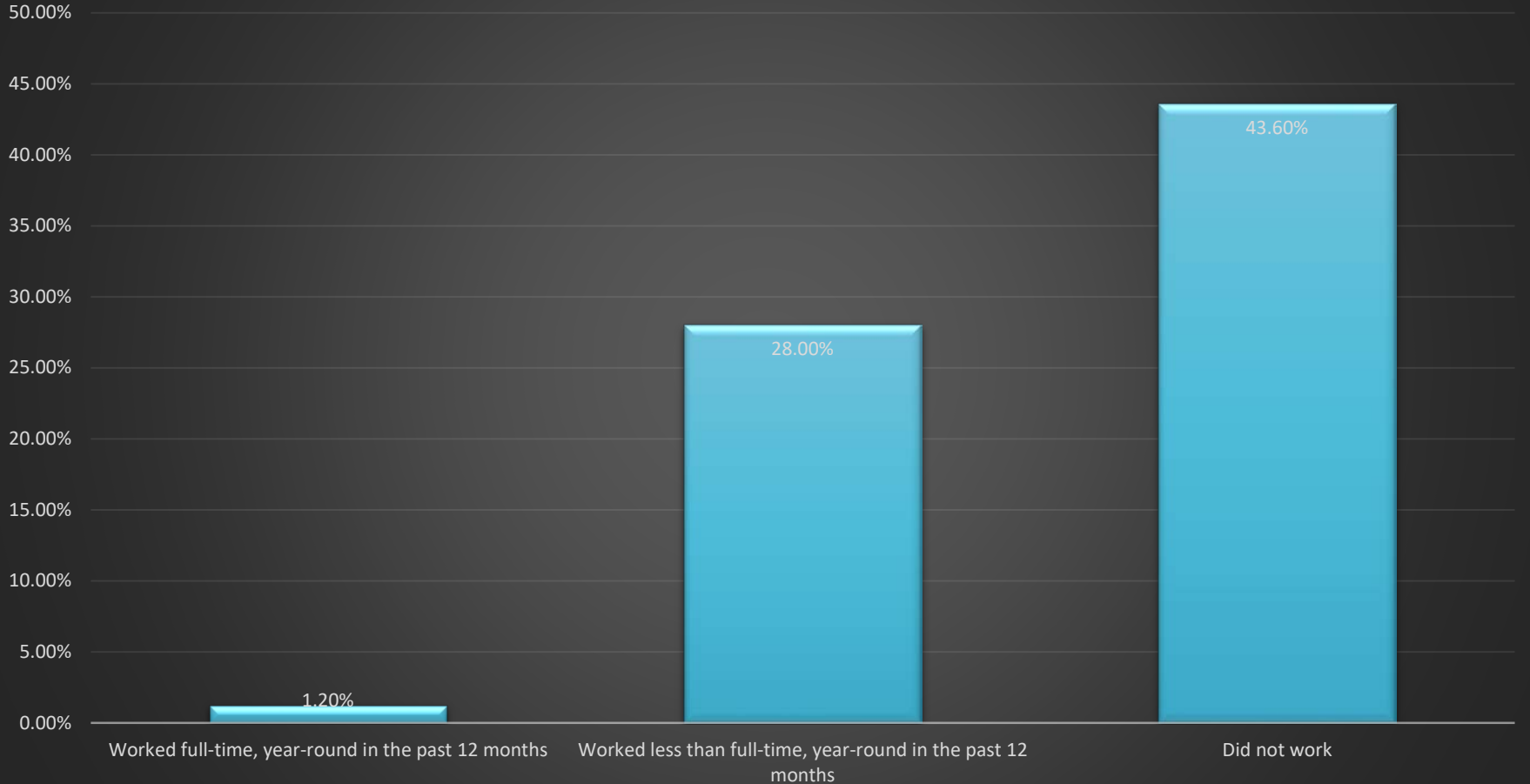
# King County Poverty Rates



# Poverty In King County By Educational Attainment

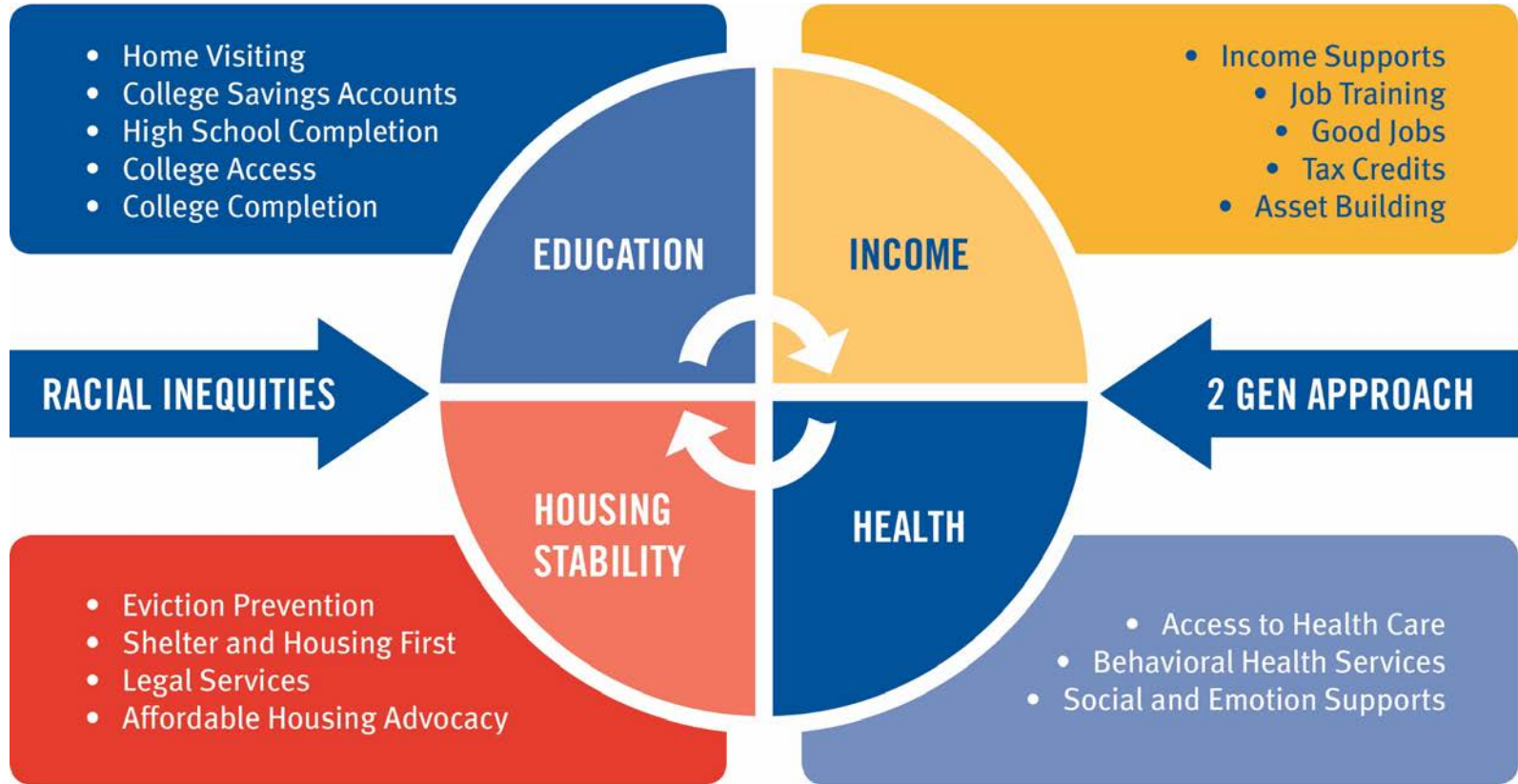


# Employment Status & Poverty In King County





# Poverty Reduction Strategies



## Weekly Earning Based on Level of Education

High School Diploma

**\$651**

Some College

**\$727**

Bachelor's Degree

**\$1,108**

Master's Degree

**\$1,323**

*Source: U.S. Department of Labor*

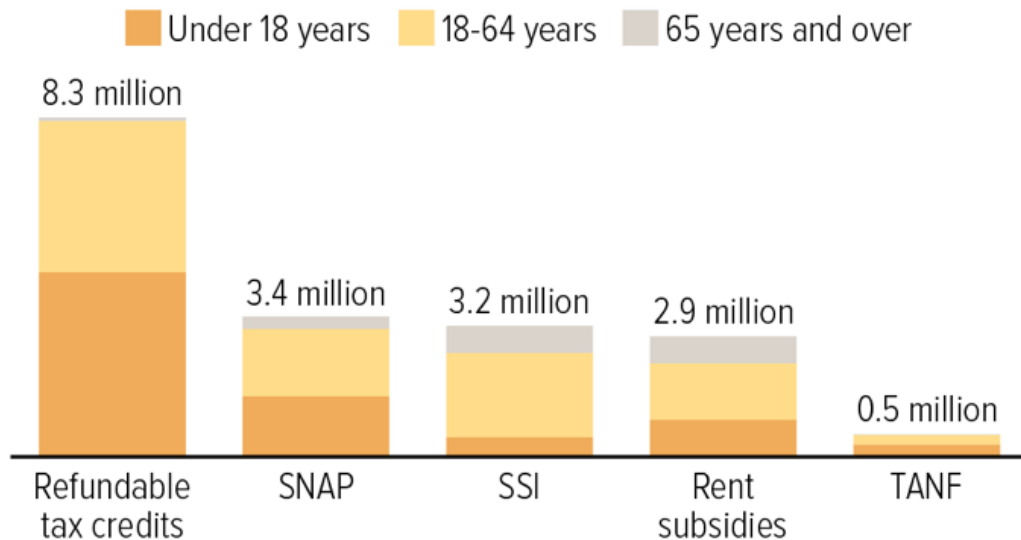
**LIVE UNITED**



United Way of King County

# Federal Low-Income Programs Lift Millions Out of Poverty

People lifted above poverty line in 2017



Refundable tax credits = Earned Income Tax Credit and refundable portion of Child Tax Credit (CTC); Census will release data in October showing impact of entire CTC, including non-refundable portion; SSI = Supplemental Security Income; TANF = Temporary Assistance for Needy Families

Note: Reflects the Supplemental Poverty Measure, which counts major non-cash and tax-based assistance as well as cash assistance. Figures would be even higher if they included corrections for underreporting of government benefits in survey data.

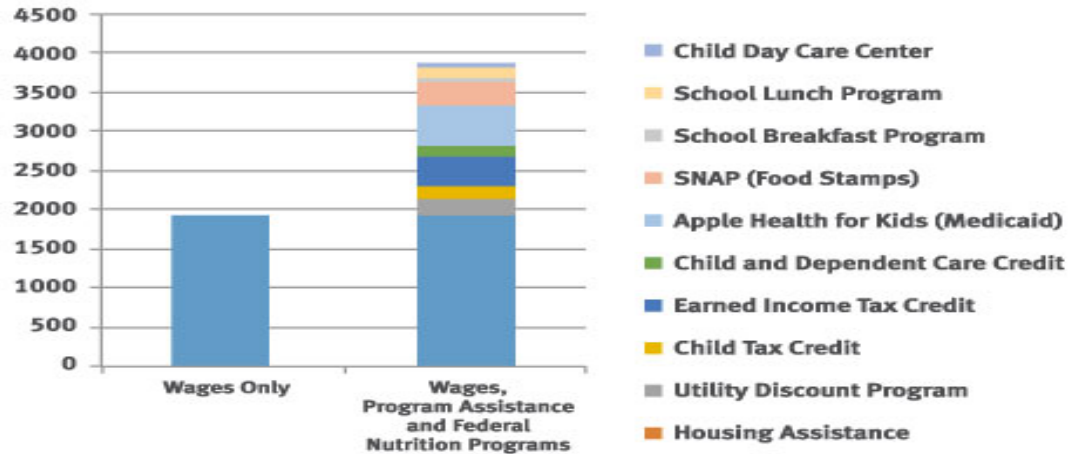
Source: U.S. Census Bureau

LIVE UNITED



United Way of Long Beach

# United Way Connects Families to Services Equal to One Month's Wages\*



Disclaimer: \*Single parent King County household with two children. Adult works full time at \$11/hour

LIVE UNITED



United Way of King County



UNITED WAY  
**BENEFITS HUB**  
Everyday Financial Tools

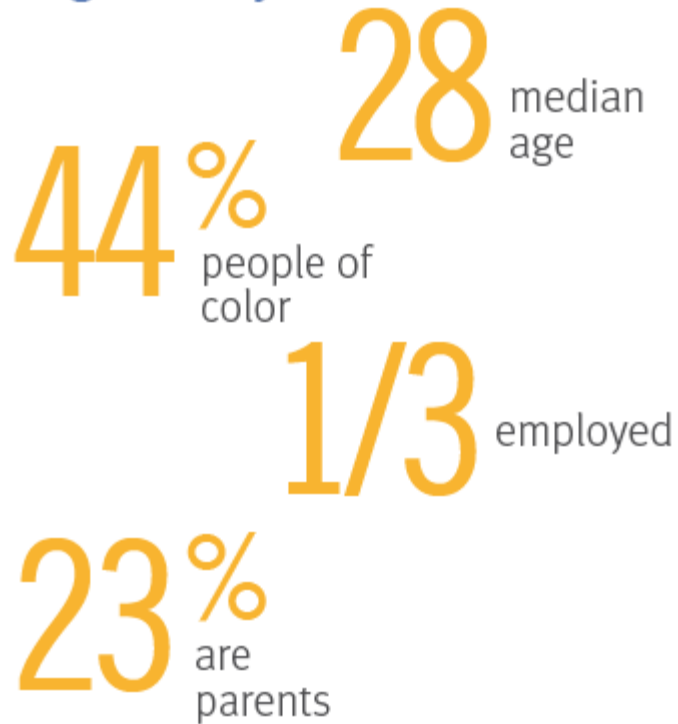


# Poverty Gets in the Way

- 89% percent of students in South King County aspire to earn at least a two-year degree
- 29% percent of students have earned a degree by their mid-twenties
  - 18% for black and African-American students
- High-income students 6x more likely to complete by 25
- Homelessness and hunger are leading issues



# Who's attending community and technical colleges in King County?



# Challenges and Barriers

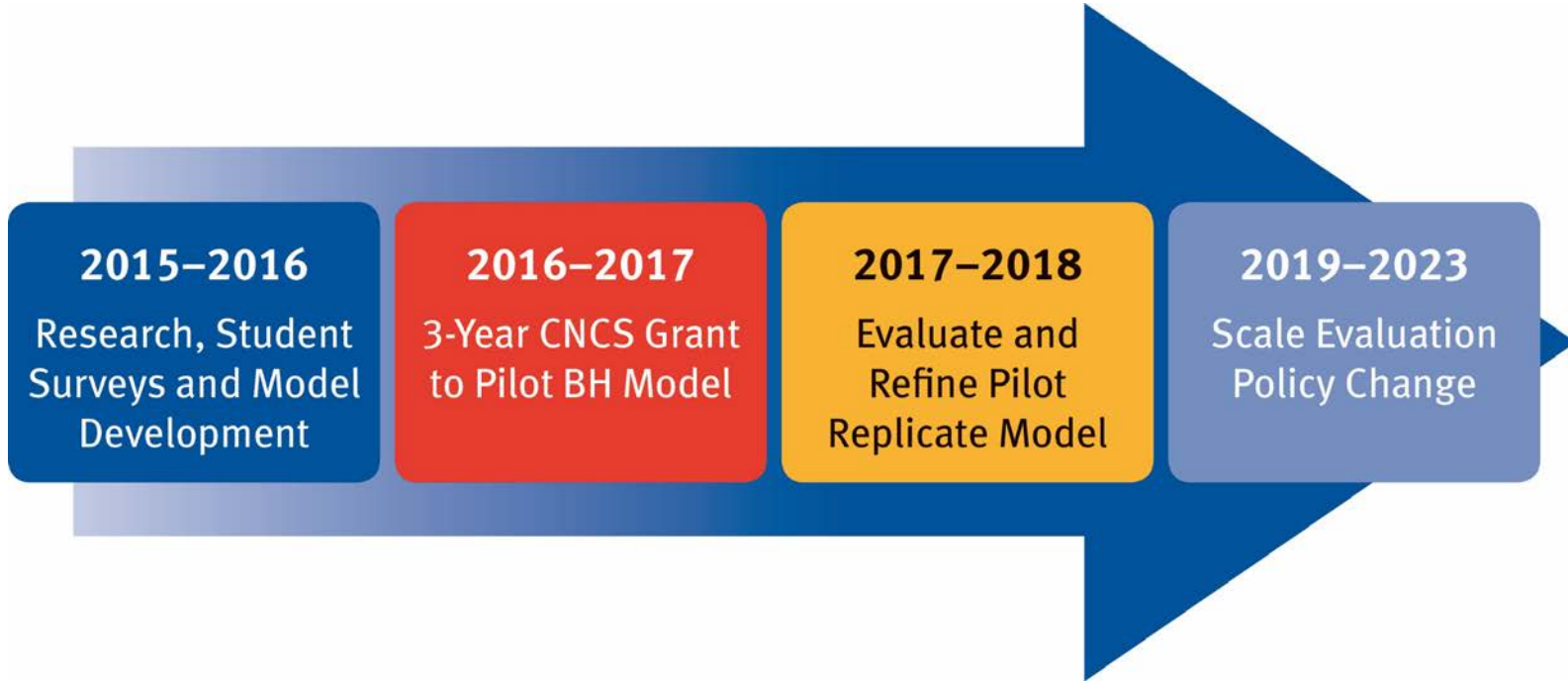
**HUNGER**  
**TRANSPORTATION** **CHILD CARE**  
**HOUSING**  
**ACCESS TO SERVICES**  
**FINANCIAL AID**  
**COMPLICATED FORMS**  
**BALANCING IT ALL**



United Way of King County Benefits Hub increases college completion for low income students by connecting students to financial assistance, housing, food, and other community resources.

- Emergency Financial Grants
- Free Tax Preparation Services
- FAFSA/WASFA Assistance
- Benefits Access
- Financial Coaching
- Housing Services
- Legal Services
- Food Pantries
- Coordinating Services Access

# Benefits Hub Planning



# Benefits Hub Expansion

## Last Year

- 6 colleges + satellite campuses
- 18 AmeriCorps members
- 4,000 students access services e.g. Food Pantry, Tax Prep, FAFSA
- 2,000+ students surveys
- Dozens of student workshops and events



# Benefits Hub Expansion

## This Year

- Coordinated one-stop services at 8 colleges
- 20 AmeriCorps Members
- 10,000 students receive services
- Grants to CBO partners to provide legal, housing, and other services
- Emergency Financial Grants
- Evaluation
- Policy Agenda



# Benefits Hub Expansion

## Future Vision

- Multi-year fundraising campaign and investments
- College Partnerships Across King County
- Benefits Hub network connecting students to services
- Services designed to respond to student need
- Equitable access to students
- Leverage public funding

## Outcomes

- Policy changes reduce poverty on campus
- More students complete degree and credential programs that lead to living wage jobs
- Reduced racial disparities in completion of certificate and degree programs
- Fewer people live in poverty

Questions?