

Title	Perspectives from Different Populations
Staff Lead	Michael P. Meotti
Position	Executive Director
Email	michaelm@wsac.wa.gov
Phone	360.753.7800
Synopsis	<p>Reaching the state’s educational attainment goals will require collaboration and commitment. As part of the Council’s effort to increase partnerships across Washington’s diverse regions and populations, the Council will hear from representatives from advocates or nonprofit community-based providers serving three target populations:</p> <ol style="list-style-type: none"> 1. Refugee and immigrant 2. Foster youth 3. Prison reentry
Guiding Questions	<p>What are the educational opportunities and challenges unique to these populations? What work is currently underway with the potential for positive impact on the educational outcomes of these populations?</p>
Possible Council Action	<input checked="" type="checkbox"/> Information/Discussion <input type="checkbox"/> Approve/Adopt <input type="checkbox"/> Other
Documents and Attachments	<input type="checkbox"/> Brief/Report <input type="checkbox"/> PowerPoint <input checked="" type="checkbox"/> Third-party materials <input type="checkbox"/> Other



The Educational Needs & Opportunities of Youth in Foster Care

Washington Student Achievement Council

Dawn Rains, Chief Policy & Strategy Officer

September 20, 2018

Child Welfare Priorities

#1

Safety

#2


Permanency

#3

Well-being (including education)




Birth Family Conditions



#1

Poor


- 47% have annual income of less than \$10,000
- 73% could not pay an important bill in the last year



#2

Single Moms

- 92% female
- 68% single parents



#3

Impacted by Trauma

- 35% experienced or perpetrated domestic violence
- 55% had been molested as children
- 45% meet the criteria for a mental illness
- 29% were actively abusing drugs or alcohol

Foster Youth Struggle in School

› Attendance

- › 31% of foster youth we are working with were chronically absent
- › Of youth who changed placements and/or schools, 50% were chronically absent

› Behavior

- › 12% of high school students were suspended or expelled
- › 23% of middle school students were suspended or expelled

› Course Performance

- › 38% were failing one or more courses

› Special Education

- › 40% have a qualifying disability

Foster Youth Are Highly Mobile

During their first year in foster care

- › 83% of kids moved 1 to 2 times
- › 13% of kids moved 3 to 4 times
- › 4% of kids moved 5 to 10 times

Adults in a Foster Child's Life

law enforcement social worker judge
court-appointed special advocate (CASA)
parent's attorney social worker's attorney
youth's attorney (12+) child therapist
parent therapist visitation social worker
parenting educator substance abuse counselor
residential treatment counselor medical doctor
income support worker dentist
speech therapist physical therapist teacher
occupational therapist tutor school counselor
school psychologist day care provider mentor

The Problem

#1

Fewer than half of youth in foster care graduate from high school.

#2

Youth who have experienced foster care are at much greater risk of poverty, homelessness, incarceration, substance abuse and early parenting.

#3

Despite decades of effort, little progress has been made to improve the education outcomes for youth in care ages 10-18.

#4

For every youth who doesn't graduate from high school, there is lifetime opportunity cost of \$772,000.

#5

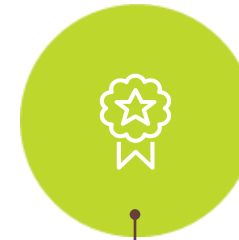
Children and youth in foster care are our kids and our responsibility.



Treehouse Goal



By 2022, youth in foster care across Washington state will graduate from high school at the same rate as their peers, with support and a plan to launch successfully into adulthood.



Scaling
Statewide



Leading
Through a
Racial
Equity
Lens



Discovery,
Pilot and
Scaling
Launch
Success



Collective
Action
Initiative

Why This Goal?



It's the right thing to do



Foster kids are struggling more than their peers



Without an education, the future is bleak



It's a good investment

No High School Diploma = Dire Outcomes

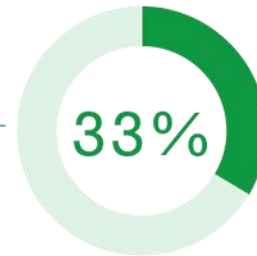


1ⁱⁿ 5

alumni of foster care will be homeless within a year of aging out



poverty line

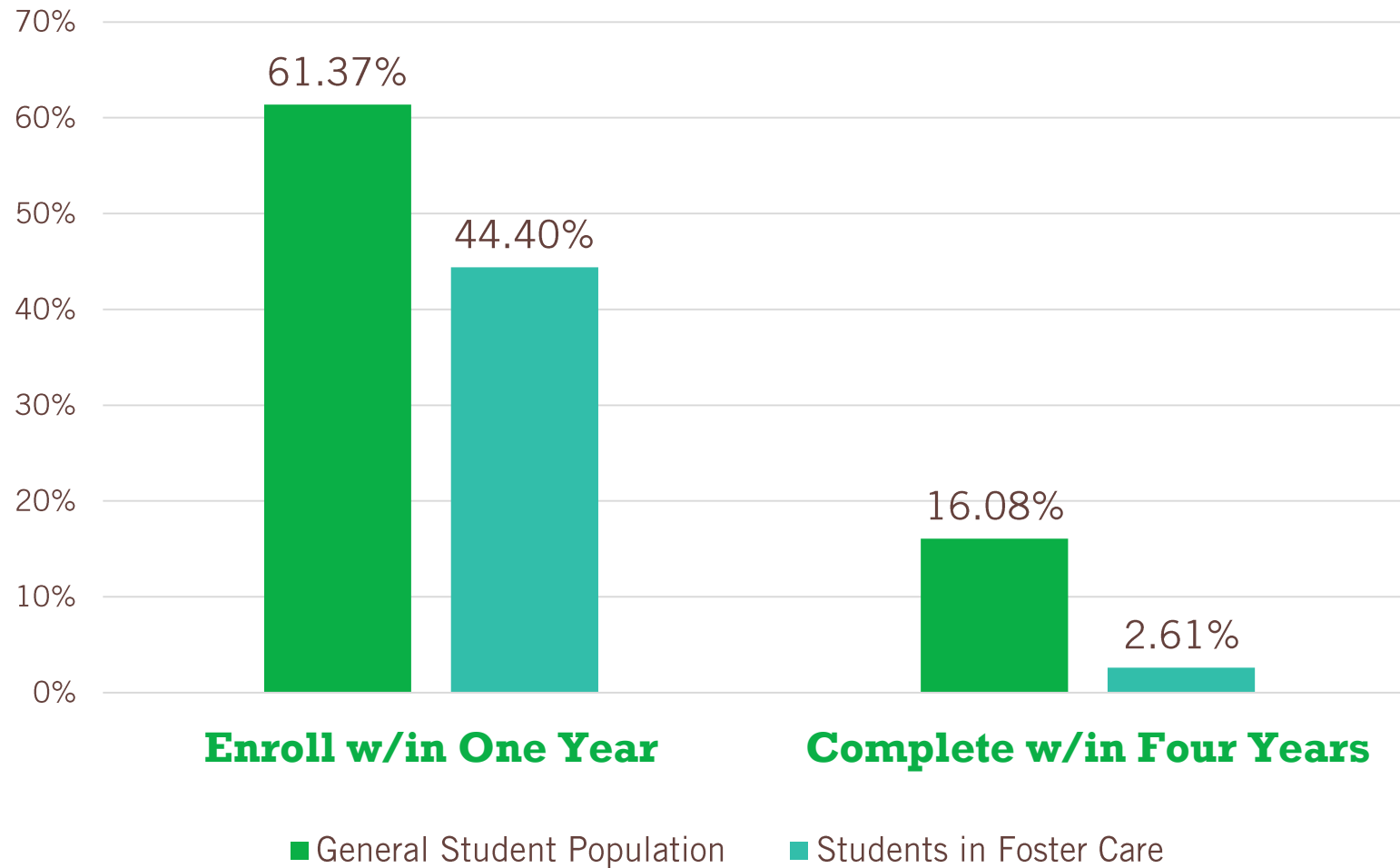


of foster care alumni live below the poverty line

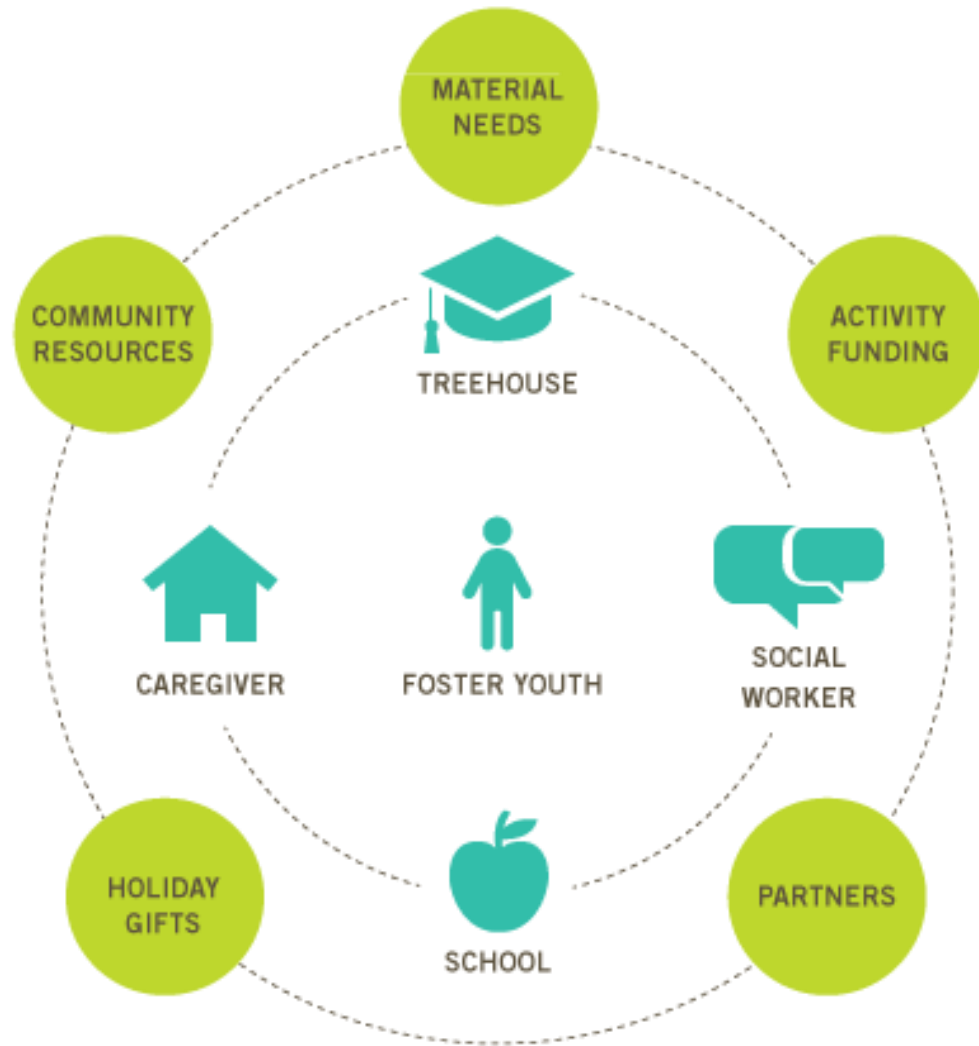
that's
3X



Post-Secondary Enrollment & Completion



Treehouse Graduation Success Model



Student-Centered Planning:

- › Goal Setting and Planning
- › Engage in Extracurricular & School Activities that Support the Plan
- › Build Self-Determination and Engagement in School
- › Remove Barriers in Enrollment, Transition and Access to Services
- › Meet Material Needs

Check & Connect:

Daily monitoring & individualized interventions:

A = Attendance

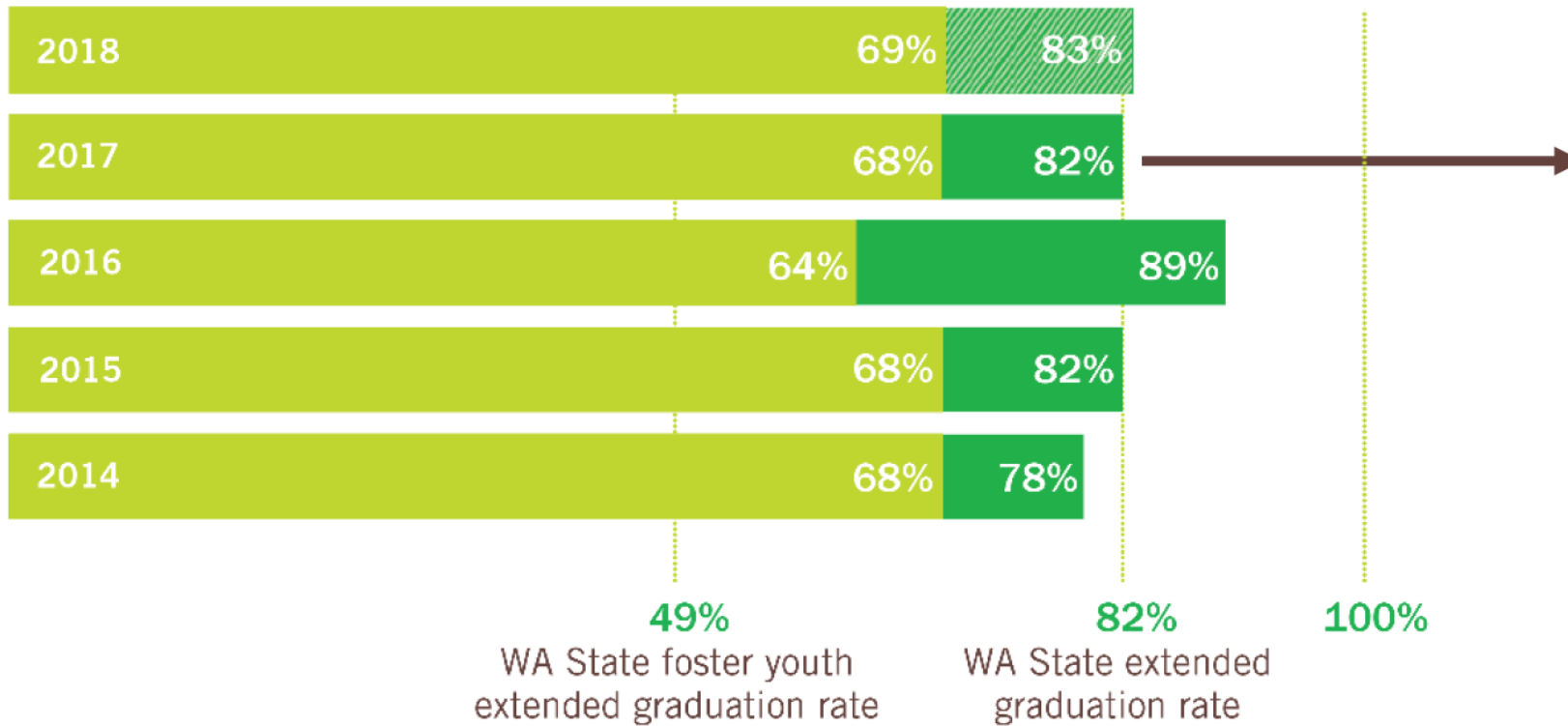
B = Behavior

C = Course Performance

Treehouse Progress to Goal

Treehouse Extended Graduation Rates

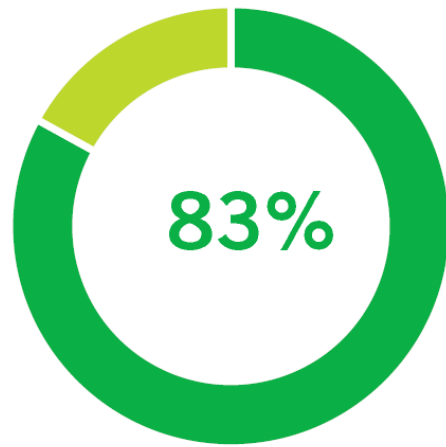
■ On-Time Rate ■ Extended Rate ■ Forecast



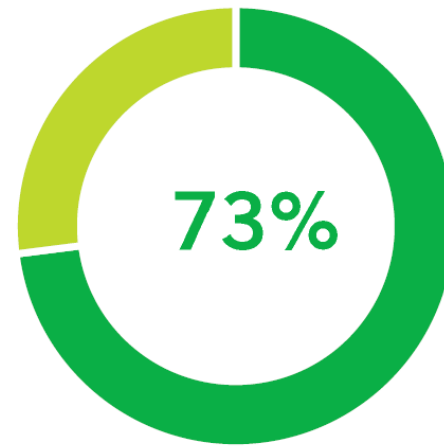
11 persistent 5th year seniors graduated in 2018.

The Treehouse Class of 2017 graduation rate is now at the same extended rate as it is for all students in Washington State!

Treehouse Class of 2018's Plans for the Future



of our graduates plan to enroll in college or vocational training



of our seniors who did not graduate and are still enrolled in Graduation Success have a plan for high school completion

Treehouse Statewide Growth Trajectory

	2011-12	2017-18	2021-22
Foster Youth	290	988	2396
School Districts	6	32	203
Schools	26	219	542
Education Specialists	10	42	192

Educational Opportunities for Youth in Foster Care

- › Educational Advocacy
- › Automatic Enrollment in College Bound
- › Educational Services & Supports
 - › Supplemental Education Transition Planning Program (SETuP)
 - › Launch Success
 - › Education & Training Vouchers (ETV)
 - › Governor's Scholarship
 - › Passport to Careers
- › Transition to Adulthood Services
 - › Extended Foster Care
 - › Independent Living
 - › Just in Time Funding





Questions?